



Nissan MY24 Pathfinder

Specifications

	ST-L	Ti	Ti-L
Engine			
3.5 Litre DOHC 24-valve direct injection V6 petrol engine	•	•	•
Power (kW @ rpm)	202 @ 6,400		
Torque (Nm @ rpm)	340 @ 4,800		
Drivetrain			
9-speed automatic transmission with paddle shifters	•	•	•
Electronic shift by wire	•	•	•
Front wheel drive (FWD)	•	•	
Drive mode selector with 5 modes	•	•	
Intelligent 4x4	◦	◦	•
Drive & terrain mode selector with 7 modes	• (4x4 only)	• (4x4 only)	•
Fuel (FWD/4x4)			
Fuel tank capacity (Litres)	71		
Fuel consumption (Litres/100km combined cycle) ^Δ (FWD / 4x4)	10 / 10.5		10.5
CO2 emission (g/km combined cycle) ^Δ (FWD / 4x4)	234 / 245		245
Brakes			
Front & rear disc brakes	•	•	•
Anti-Lock Braking System (ABS)	•	•	•
Electronic brake force distribution	•	•	•
Brake assist	•	•	•
Electronic parking brake	•	•	•
Hill Start Assist	•	•	•
Hill Descent Control	◦ (4x4 only)	◦ (4x4 only)	•
Suspension and steering			
Independent front suspension	•	•	•
Independent multi-link rear suspension	•	•	•
Front & rear stabiliser bars	•	•	•
Dual pinion electric power steering	•	•	•
Weights (FWD/4x4)			
Gross vehicle mass (kg) [◦]	2,750		
Kerb mass [†] (kg)	1,983 / 2,052	1,980 / 2,044	2,083
Maximum unbraked towing capacity [‡] (kg)	750		
Maximum braked towing capacity [‡] (kg)	2,700		
Maximum towball download [‡] (kg)	270		
Maximum roof load (kg)	74		
Dimensions			
Exterior			
Overall length (mm)	5,004		
Overall width (mm, without mirrors)	1,978		
Overall height (mm, to antenna)	1,802		1,798
Wheelbase (mm)	2,900		
Track width (mm, front and rear)	1,700		

Specifications

	ST-L	Ti	Ti-L
Ground clearance (mm, unladen)	178		181
Turning circle (m, curb-to-curb)	11.8		
Interior (1st/2nd/3rd row)			
Head room (mm)	1,075 / 1,008 / 961		1,046 / 976 / 961
Leg room (mm)	1,126 / 902 / 712		
Shoulder room (mm)	1,545 / 1,515 / 1,485		
Hip room (mm)	1,482 / 1,430 / 1,187		
Cargo capacity: second & third row upright (Litres)	205		
Cargo capacity: second row upright/third row folded flat (Litres)	554		
Cargo capacity: second & third row folded flat (Litres)	782		

Safety and security

Intelligent Around View® Monitor with Moving Object Detection	•	•	•
ProPILOT*	•	•	•
Rear view camera	•	•	•
Rear parking sensors	•	•	•
Front parking sensors	•	•	•
Intelligent Forward Collision Warning	•	•	•
Intelligent Emergency Braking with junction assist & pedestrian/cyclist detection	•	•	•
Intelligent Rear Automatic Braking	•	•	•
Rear Cross Traffic Alert	•	•	•
Blind Spot Warning	•	•	•
Intelligent Blind Spot Intervention	•	•	•
Lane Departure Warning	•	•	•
Intelligent Lane Intervention	•	•	•
Intelligent Driver Alert	•	•	•
Intelligent Cruise Control	•	•	•
Traffic Sign Recognition	•	•	•
Tyre Pressure Monitoring System	•	•	•
Trailer sway control	•	•	•
Vehicle Dynamic Control (VDC) with Traction Control System (TCS)	•	•	•
Rear seat (door) alert	•	•	•
Vehicle security system	•	•	•
Temporary use spare wheel and tyre	•	•	•
Airbags			
Front seat airbags (driver & passenger)	•	•	•
Seat side airbags (driver & passenger, second row outboard)	•	•	•
Front row far side airbag (centre)	•	•	•
Side curtain airbags (all rows)	•	•	•

Audio and connectivity

9.0" touchscreen display	•	•	•
Satellite navigation	•	•	•
Wireless Apple CarPlay®^ & wired Android Auto™^	•	•	•
Wireless smartphone charger°		•	•
Bluetooth® phone & audio streaming	•	•	•
Voice recognition	•	•	•
6 speaker audio system	•		
Bose® 13 speaker premium audio system including dual subwoofer		•	•
AM/FM radio	•	•	•
DAB+ digital Radio	•	•	•
4 USB instrument panel (data & charge): 1 x USB-A, 1 x USB-C second row (charge only): 1 x USB-A, 1 x USB-C	•		
5 USB instrument panel (data & charge): 1 x USB-A, 1 x USB-C second row (charge only): 1 x USB-A, 1 x USB-C third row (charge only): 1 x USB-A		•	•
2 12V outlets (1 x instrument panel, 1 x cargo area)	•	•	•

Comfort and convenience

7.0" TFT Advanced Drive-Assist® Display instrument cluster	•	•	
12.3" TFT Advanced Drive-Assist® Display instrument cluster			•
10.8" Head-Up Display	•	•	•
Tri-zone automatic climate control	•	•	•
Second & third row air vents	•	•	•
Intelligent Key™ with push button engine start, approach unlock and walkaway lock function	•	•	•
Memory system (driver seat, steering wheel & door mirrors)			•

Specifications

	ST-L	Ti	Ti-L
Automatic LED headlights	•	•	•
High Beam Assist	•	•	•
Power adjustable, power folding, heated door mirrors	•	•	
Power adjustable, power folding, heated door mirrors with kerbside tilt to reverse			•
Remote engine start	•	•	•
Power tailgate	•	•	•
Built-in rear door sunshades		•	•
Automatic dimming rear view mirror		•	•
Intelligent Rear View Mirror			•
Automatic rain-sensing front wipers			•

Interior

Steering wheel – leather-accented*	•	•	•
Tilt & telescopic steering wheel adjustment	•	•	
Tilt & telescopic steering wheel power adjustment			•
Ambient interior lighting			•
Front row sun visors with illuminated vanity mirrors	•	•	•
Overhead map lights (first & second row)	•	•	•
4 cargo tie-down hooks	•	•	•
Cargo area under-floor storage	•	•	•
Seating			
8-seat configuration (2:3:3)	•	•	
7-seat configuration (2:2:3)			•
EZ FLEX® seating system with Latch and Glide®>	•	•	•
Second row slide, recline & fold down captains chairs			•
Third row 60/40-split fold, fold down, reclining bench seat	•	•	•
10-way power driver seat	•	•	
6-way manual passenger seat	•	•	
12-way power driver seat			•
4-way power passenger seat			•
Heated front seats	•	•	•
Heated second row outboard seats		•	•
Ventilated front seats			•
Second-row removable centre console with cup holders			•
Child restraint anchorages (2nd row outboard seats with ISOFIX and tether, centre seat with tether. 3rd row left side with ISOFIX and tether.)	•	•	
Child restraint anchorages (2nd row outboard seats with ISOFIX and tether. 3rd row left side with ISOFIX and tether.)			•
Trim			
Seat trim – cloth	•		
Seat trim – cloth and leather-accented* (first & second rows)		•	
Seat trim – quilted leather-accented* (first & second rows)			•
Seat trim – synthetic leather-look (third row)		•	•
Stainless steel front door kick plates			•
Front seatback pockets	•	•	•
Matte chrome interior door handles	•	•	•
Nissan Genuine front and rear carpet floor mats	•	•	•

Exterior

Black side moulding	•	•	
Chrome side moulding			•
Chrome side window surround	•	•	•
Body colour door handles	•	•	•
Silver lower front fascia			•
Silver rear fascia			•
Black roof rails	•	○	○
Silver roof rails		•	•
Body colour roof (with body colour rear spoiler, shark fin antenna and door mirrors)	•	•	•
Black painted roof* (with black rear spoiler, shark fin antenna, door mirrors and roof rails)		○	○
Exterior – lighting			
LED headlights	•	•	•
LED tail lights	•	•	•
LED daytime running lights	•	•	•
LED fog lights	•	•	•
LED high mounted stop light	•	•	•
LED turn signal in door mirrors	•	•	•

Specifications

	ST-L	Ti	Ti-L
Exterior – wheel & tyre			
18" dark painted alloy wheels with 255/60 R18 tyres	•		
18" machine finished alloy wheels with 255/60 R18 tyres		•	
20" machine finished alloy wheels with 255/50 R20 tyres			•
Exterior – glass			
Privacy glass (second row & rear windows)	•	•	•
Tilt & slide power sunroof with panoramic glass roof			•
Exterior paint			
Super Black	•	•	•
Glacier White	•	•	•
Brilliant Silver#	■	■	■
Gun Metallic#	■	■	■
Scarlet Ember#	■	■	■
Ivory Pearl#	■	■	■
Deep Ocean Blue Pearl#	■	■	■
Ivory Pearl with black roof#~		■	■
Scarlet Ember with black roof#~		■	■
Gun Metallic with black roof#~		■	■
Boulder Grey with black roof#~		■	■

•

 Standard

Not available

◦

 Option

■

 Premium Paint

Choose your exterior paint colour



Glacier White



Ivory Pearl#



Brilliant Silver#



Gun Metallic#



Super Black



Deep Ocean Blue Pearl#



Scarlet Ember#



Ivory Pearl with black roof#~



Boulder Grey with black roof#~

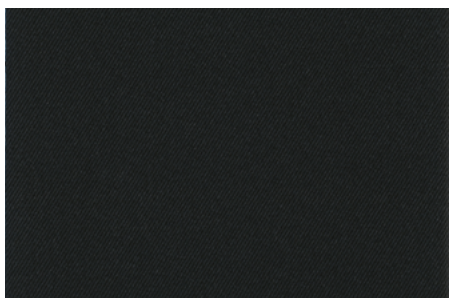


Gun Metallic with black roof#~



Scarlet Ember with black roof#~

Choose your interior trim



Black cloth seat trim
Standard on ST-L.



Black cloth and leather-accented* seat trim
(synthetic leather-look third row)
Standard on TI.



Black quilted leather-accented* seat trim
(synthetic leather-look third row)
Standard on TI-L.

Wheel and tyre options



18" dark painted alloy wheel
Standard on ST-L.



18" machine finished alloy wheel
Standard on TI.



20" machine finished alloy wheel
Standard on TI-L.

- ^Δ Figures tested in accordance with ADR81/02 (combined test). Figures stated for the purposes of comparison amongst vehicles only. Actual fuel consumption and CO2 emissions depends on factors such as traffic conditions, vehicle condition, how you drive and any accessories fitted.
- [◦] Gross Vehicle Mass is the maximum loaded mass of a vehicle.
- [†] Kerb mass is the unladen mass of the vehicle with full tank of fuel without any accessories fitted.
- [‡] Towing capacity is subject to towbar/towball capacity and is based on the fitment of a Genuine Nissan towbar. Towing capacity figure described is a maximum figure. Actual towing capacity depends on the laden mass of the vehicle, driving conditions, fitment of any accessories or towing equipment limitations including the maximum towball download. The maximum towball download for this vehicle is 270kg.
- ⁺ ProPILOT cannot prevent collisions. It is the driver's responsibility to be in control of the vehicle at all times. Always monitor traffic conditions and keep both hands on the steering wheel. System operates only when lane markings are detected. Does not function in all weather, traffic and road conditions. System has limited control capability and the driver may need to steer, brake or accelerate at any time to maintain safety. See Owner's Manual for safety information.
- [^] CarPlay is a registered trademark of Apple Inc. Android Auto is a trademark of Google LLC. Compatible device required. Wired connections require a USB connection.
- [◦] Compatible device required.
- ^{*} Leather-accented features and upholstery may contain synthetic material. Minor trim variations may occur from time to time. Leather-accented seat trim applies to first & second rows only. Third row synthetic leather-look.
- [>] Latch element of the Latch and Glide® Technology requires ISOFIX compatible child seats. Do not perform the slide forward function with the child restraint system occupied.
- [#] Premium paint available at additional cost. In some cases, the printed colours may vary from the actual paint colours.
- [~] Black painted roof available at additional cost.



FINANCIAL
SERVICES

For more information please visit nissan.com.au/owners, ask your Nissan Dealer or phone 1800 035 035 during normal AEST business hours.

All illustrations, information and specifications presented and referred to in this brochure were correct at the time this brochure was approved for printing. The colours in the photographs may vary from actual colours. Nissan Motor Co (Australia) Pty. Ltd. reserves the right, subject to the laws of Australia and/or the regulations of any competent authority which may apply from time to time, at its discretion at any time and without prior notice, to discontinue or change the models, features, specifications, designs and prices of the products referred to in this brochure and any optional equipment therefore without incurring any liability whatsoever to any purchaser or prospective purchaser of any such products. Some of the items referred to herein are optional at extra cost. Some options may be required in combination with other options. Always consult your Nissan Dealer for the latest information on models, specifications, features, prices, options and availability. Nissan Motor Co (Australia) Pty. Ltd. ACN 004 663 156. Updated May 2024.



NissanAustralia



@nissanaustralia



NissanAustralia