



Nissan MY24 X-TRAIL

Specifications

Specifications	e-POWER							
	ST	ST-L	N-TREK	Ti	Ti-L	ST-L	Ti	Ti-L
Engine								
2.5 Litre DOHC 16-valve direct injection 4 cylinder petrol engine	•	•	•	•	•			
Power (kW @ rpm)	135 @ 6,000							
Torque (Nm @ rpm)	244 @ 3,600							
e-POWER with 1.5 Litre 16-valve direct injection 3 cylinder petrol engine						•	•	•
Variable compression turbo						•	•	•
e-POWER electric powertrain						•	•	•
Power (kW, front / rear electric motors)						150/100 (Total system output 157)		
Torque (Nm, front / rear electric motors)						330/195 ^o		
e-POWER internal combustion engine						•	•	•
Power (kW @ rpm)						106 @ 4,400		
Torque (Nm @ rpm)						250 @ 2,400		
Drivetrain								
CVT (Continuously Variable Transmission) with paddle shifters	•	•	•	•	•			
Electronic shift by wire	•	•	•	•	•	•	•	•
Front wheel drive (FWD)	•	•	•					
Drive mode selector with 3 modes (Auto, Eco, Sport)	•	•	•					
Intelligent 4x4	o	o	o	•	•			
Drive & terrain mode selector with 5 modes (Auto, Eco, Sport, Snow, Off-Road)	o (4x4 only)	o (4x4 only)	o (4x4 only)	•	•	•	•	•
e-4ORCE electric-drive four-wheel-control technology						•	•	•
e-Pedal Step						•	•	•
Fuel (FWD/4x4)								
Fuel tank capacity (Litres)	55							
Fuel consumption (FWD/4x4, Litres/100km combined cycle) ^a	7.4/7.8			7.8		6.1		
CO2 emission (g/km combined cycle) ^a	174/183			183		139		
Fuel requirement (minimum/recommended, RON)	91/91					91/95		
Brakes								
Front & rear disc brakes	•	•	•	•	•	•	•	•
Anti-Lock Braking System (ABS)	•	•	•	•	•	•	•	•
Electronic brake force distribution	•	•	•	•	•	•	•	•
Brake assist	•	•	•	•	•	•	•	•
Electronic parking brake	•	•	•	•	•	•	•	•
Hill Start Assist	•	•	•	•	•	•	•	•
Hill Descent Control	o (4x4 only)	o (4x4 only)	o (4x4 only)	•	•	•	•	•
Suspension and steering								
Independent front suspension	•	•	•	•	•	•	•	•
Independent multi-link rear suspension	•	•	•	•	•	•	•	•
Front & rear stabiliser bars	•	•	•	•	•	•	•	•
Dual pinion electric power steering	•	•	•	•	•	•	•	•

Nissan X-TRAIL specifications

						e-POWER		
	ST	ST-L	N-TREK	TI	TI-L	ST-L	TI	TI-L
Dimensions								
Exterior								
Overall length (mm)	4,680							
Overall width (mm, including mirrors)	2,065							
Overall height (mm, unladen)	1,725							
Wheelbase (mm)	2,705							
Track width (mm, front/rear)	1,585/1,590							1,575/1,580
Ground clearance unladen (mm, between axles)	205					187		
Turning circle (m, curb-to-curb)	11.1							
Interior								
Head room (mm, first row/second row)	1,050/1,000			999/960				
Leg room (mm, first row/second row)	1,095/892							
Shoulder room (mm, first row/second row)	1,451/1,422				1,451/1,398	1,451/1,422		1,451/1,398
Hip room (mm, first row/second row)	1,374/1,274							
5-seat cargo capacity: second row upright (Litres, to roof)	585					575		
7-seat cargo capacity: second row upright/third row folded flat (Litres, to roof)	465							
Weights (FWD/4x4)								
Gross Vehicle Mass* (kg)	2,040/2,295			2,135		2,380		
Kerb mass† (kg)	1,540/1,643	1,578/1,666		1,668	1,672	1,871	1,903	1,911
Maximum braked towing capacity* (kg)	2,000					1,650		
Maximum unbraked towing capacity* (kg)	750							
Maximum roof load (kg)	100							
Safety and security								
Intelligent Around View® Monitor with Moving Object Detection		•	•	•	•	•	•	•
ProPILOT*		•	•	•	•	•	•	•
Rear view camera	•	•	•	•	•	•	•	•
Rear parking sensors	•	•	•	•	•	•	•	•
Front parking sensors		•	•	•	•	•	•	•
Intelligent Forward Collision Warning	•	•	•	•	•	•	•	•
Intelligent Emergency Braking with junction assist & pedestrian/cyclist detection	•	•	•	•	•	•	•	•
Intelligent Rear Automatic Braking	•	•	•	•	•	•	•	•
Rear Cross Traffic Alert	•	•	•	•	•	•	•	•
Blind Spot Warning	•	•	•	•	•	•	•	•
Intelligent Blind Spot Intervention	•	•	•	•	•	•	•	•
Lane Departure Warning	•	•	•	•	•	•	•	•
Intelligent Lane Intervention	•	•	•	•	•	•	•	•
Intelligent Driver Alert	•	•	•	•	•	•	•	•
Intelligent Cruise Control	•	•	•	•	•	•	•	•
Traffic Sign Recognition	•	•	•	•	•	•	•	•
Tyre Pressure Monitoring System		•	•	•	•	•	•	•
Trailer sway control	•	•	•	•	•	•	•	•
Speed limiter	•	•	•	•	•	•	•	•
Vehicle Dynamic Control (VDC) with Traction Control System (TCS)	•	•	•	•	•	•	•	•
Acoustic Vehicle Alerting System (low speeds up to 30 km/h)						•	•	•
Rear seat (door) alert	•	•	•	•	•	•	•	•
Temporary use spare wheel and tyre	•	•	•	•	•			
Tyre repair kit						•	•	•
Airbags								
Front seat airbags (driver & front passenger)	•	•	•	•	•	•	•	•
Seat side airbags (driver & front passenger)	•	•	•	•	•	•	•	•
Front row far side airbag (centre)	•	•	•	•	•	•	•	•
Side curtain airbags (driver & passenger side)	•	•	•	•	•	•	•	•
Comfort and convenience								
7.0" TFT Advanced Drive-Assist® Display instrument cluster	•	•				•		
12.3" TFT Advanced Drive-Assist® Display instrument cluster			•	•	•		•	•
10.8" Head-Up Display			•	•	•		•	•
Air-conditioning	•							
Dual-zone automatic climate control		•	•			•		

Nissan X-TRAIL specifications

	e-POWER							
	ST	ST-L	N-TREK	Ti	Ti-L	ST-L	Ti	Ti-L
Tri-zone automatic climate control				•	•		•	•
Second row air vents	•	•	•	•	•	•	•	•
Intelligent Key™ with push button engine start	•	•	•	•	•	•	•	•
Remote engine start					•			
Memory system (driver seat & door mirrors)					•			•
Automatic LED headlights	•	•	•	•	•	•	•	•
High Beam Assist	•	•	•			•		
Adaptive Driving Beam headlights				•	•		•	•
Power adjustable, power folding, heated door mirrors	•	•	•	•		•	•	
Power adjustable, power folding, heated door mirrors with tilt to reverse					•			•
Power tailgate				•			•	
Motion sensing power tailgate with position memory					•			•
Built-in rear door sunshades			•		•			•
Automatic rain-sensing front wipers			•	•	•		•	•
Automatic dimming rear view mirror		•	•			•		
Intelligent Rear View Mirror				•	•		•	•
Capless fuel filler door	•	•	•	•	•	•	•	•

Audio and connectivity								
8.0" touchscreen display	•	•				•		
12.3" touchscreen display			•	•	•		•	•
Satellite navigation			•	•	•		•	•
Apple CarPlay®^ & Android Auto™^	•	•				•		
Wireless Apple CarPlay®^ & wired Android Auto™^			•	•	•		•	•
Wireless smartphone charger^				•	•		•	•
Bluetooth® phone & audio streaming	•	•	•	•	•	•	•	•
6 speaker audio system	•	•	•	•		•	•	
Bose® 10 speaker premium audio system					•			•
Active noise cancelling						•	•	•
AM/FM radio and DAB+ digital radio	•	•	•	•	•	•	•	•
4 USB instrument panel (data & charge): 1x USB-A, 1x USB-C second row (charge only): 1x USB-A, 1x USB-C	•	•	•	•	•	•	•	•
2 12V outlet (1 x instrument panel, 1 x cargo area)	•	•	•	•	•	•	•	•

Interior								
Steering wheel – urethane	•							
Steering wheel – leather-accented*		•	•	•	•	•	•	•
Tilt & telescopic steering wheel adjustment	•	•	•	•	•	•	•	•
Heated steering wheel					•			•
Ambient interior lighting – console tray				•			•	
Ambient interior lighting – console tray & door trim					•			•
Butterfly opening centre console	•	•	•	•	•	•	•	•
Front row sun visors with illuminated vanity mirrors	•	•	•	•	•	•	•	•
Divide-N-Hide® configurable cargo system		◦ (5-seat only)	◦ (5-seat only)	•	•	•	•	•
Cargo area removable tonneau cover	•	•	•	•	•	•	•	•
Cargo area light	•	•	•	•	•	•	•	•
4 cargo tie-down hooks	•	•	•	•	•	•	•	•
Seating								
5-seat configuration (2:3)	•	•	•	•	•	•	•	•
7-seat configuration (2:3:2)	◦ (4x4 only)	◦ (4x4 only)	◦ (4x4 only)					
6-way manually adjustable driver seat with 2-way power lumbar/4-way manually adjustable passenger seat	•							
10-way power adjustable driver seat (including 2-way power lumbar)/4-way manually adjustable passenger seat		•	•			•		
10-way power adjustable driver/passenger seat (including 2-way power lumbar)				•	•		•	•
Heated front seats		•	•	•	•	•	•	•
Heated second row outboard seats					•			•
60/40 split fold second row seat with manual recline and centre armrest	•							
40/20/40 split folding second row seat with manual recline, centre pass-through or centre armrest	◦ (7-seat only)	•	•	•	•	•	•	•
Sliding second row seats	◦ (7-seat only)	•	•	•	•	•	•	•
Child restraint anchorage (ISOFIX second row, outboard seats/tether second row, all seats)	•	•	•	•	•	•	•	•

Nissan X-TRAIL specifications

	e-POWER							
	ST	ST-L	N-TREK	Ti	Ti-L	ST-L	Ti	Ti-L
Trim								
Seat trim – cloth	•					•		
Seat trim – synthetic leather		•	•			•		
Seat trim – genuine leather-accented*				•			•	
Seat trim – quilted Nappa leather-accented*					•			•
Front seatback pockets	•	•	•	•	•	•	•	•
Exterior								
Body colour door handles	•	•		•	•	•	•	•
Black door handles			•					
V-motion front grille with silver accent	•	•		•	•			
V-motion front grille with black accent			•			•	•	•
Silver roof rails	•	•		•	•	•	•	•
Black roof rails			•					
Black side moulding	•	•	•			•		
Chrome side moulding				•	•		•	•
Grey lower front and lower rear fascia	•	•				•		
N-TREK front and lower rear fascia			•					
Silver lower front and lower rear fascia				•	•		•	•
Body colour roof (with body colour rear spoiler, shark fin antenna and door mirrors) [mirrors excl. N-TREK])	•	•	•	•	•	•	•	•
Black painted roof*- (with black rear spoiler, shark fin antenna and door mirrors)			◦	◦	◦		◦	◦
Black door mirrors			•					
e-POWER badge (front doors & tailgate). e-4ORCE badge (tailgate)						•	•	•
Exterior – lighting								
LED headlights	•	•	•	•	•	•	•	•
LED tail lights	•	•	•	•	•	•	•	•
LED daytime running lights	•	•	•	•	•	•	•	•
LED fog lights		•	•	•	•	•	•	•
LED high mounted stop light	•	•	•	•	•	•	•	•
LED turn signal in door mirrors	•	•	•	•	•	•	•	•
Exterior – wheel & tyre								
17" alloy wheels with 235/65 R17 tyres	•							
18" alloy wheels with 235/60 R18 tyres		•				•		
18" N-TREK alloy wheels with 235/60 R18 tyres			•					
19" alloy wheels with 235/55 R19 tyres				•	•		•	◦
20" alloy wheels with 255/45 R20 tyres								•
Exterior – glass								
Privacy glass (second row & rear windows)		•	•	•	•	•	•	•
Tilt & slide power sunroof with panoramic glass roof				•	•		•	•
Exterior paint								
Solid White	•							
Scarlet Ember	•	•		•	•	•	•	•
Brilliant Silver#	■	■		■	■	■	■	■
Gun Metallic#	■	■	■	■	■	■	■	■
Caspian Blue#	■	■		■	■	■	■	■
Diamond Black#	■	■	■	■	■	■	■	■
Champagne Silver#		■	■	■	■	■	■	■
Ivory Pearl#		■	■	■	■	■	■	■
Ceramic Grey#		■	■	■	■	■	■	■
Ceramic Grey with black roof*-			■	■	■		■	■
Ivory Pearl with black roof#-			■	■	■		■	■
Caspian Blue with black roof#-				■	■		■	■
Champagne Silver with black roof#-			■				■	■

•

Standard

Not available

◦

Option

■

Premium Paint

Nissan X-TRAIL specifications

Choose your exterior paint colour



Solid White



Ivory Pearl[#]



Brilliant Silver[#]



Ceramic Grey[#]



Gun Metallic[#]



Diamond Black[#]



Champagne Silver[#]



Scarlet Ember



Caspian Blue[#]



Ivory Pearl with black roof^{#~}



Ceramic Grey with black roof^{#~}



Champagne Silver with black roof^{#~}



Caspian Blue with black roof^{#~}

Wheel and tyre options



17" alloy wheel
Standard on ST grades



18" alloy wheel
Standard on ST-L grades



18" N-TREK alloy wheel
Standard on N-TREK



19" alloy wheel
Standard on TI grades
Standard on TI-L 2.5L
Optional on TI-L e-POWER

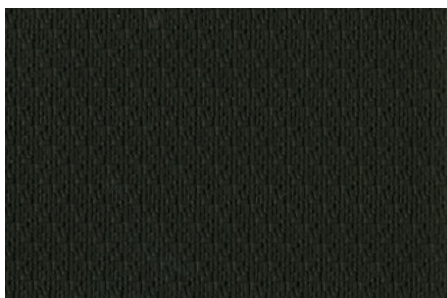


20" alloy wheel
Standard on TI-L e-POWER

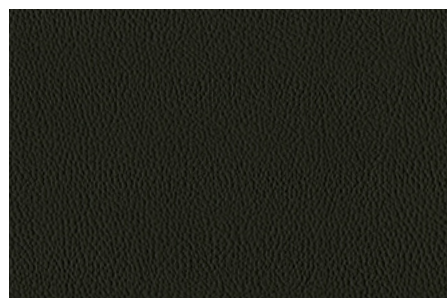
Choose your interior trim



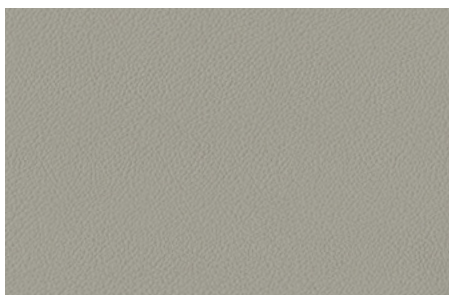
Light charcoal seat trim.
Available on ST.



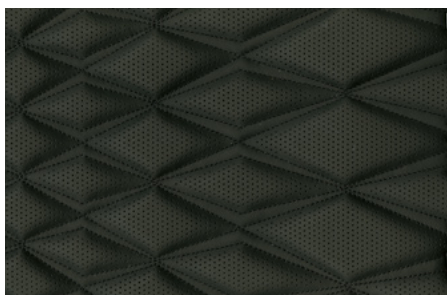
Black synthetic leather seat trim.
Available on ST-L & N-TREK



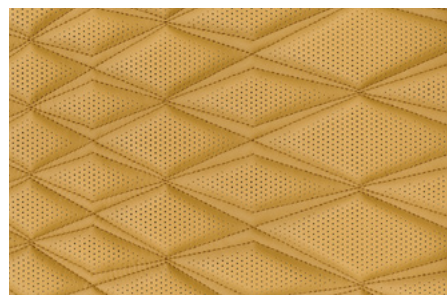
Black genuine leather-accented* seat trim.
Available on Ti.



Light grey genuine leather-accented* seat trim.
Available on Ti.



Black quilted Nappa leather-accented* seat trim.
Available on Ti-L.



Tan quilted Nappa leather-accented* seat trim. Available
on Ti-L.

- [□] Torque figures are quoted independently for front and rear electric motors respectively and cannot be added together.
- [△] Figures tested in accordance with ADR81/02 (combined test). Figures stated for the purposes of comparison amongst vehicles only. Actual fuel consumption and CO2 emissions depends on factors such as traffic conditions, vehicle condition, how you drive and any accessories fitted.
- [▫] Gross Vehicle Mass is the maximum loaded mass of a vehicle.
- [†] Kerb mass is the unladen mass of the vehicle with full tank of fuel without any accessories fitted.
- [‡] Towing capacity is subject to towbar/towball capacity and is based on the fitment of a Genuine Nissan towbar. Towing capacity figure described is a maximum figure. Actual towing capacity depends on the laden mass of the vehicle, driving conditions, fitment of any accessories or towing equipment limitations including the maximum towball download.
- ⁺ ProPILOT cannot prevent collisions. It is the driver's responsibility to be in control of the vehicle at all times. Always monitor traffic conditions and keep both hands on the steering wheel. System operates only when lane markings are detected. Does not function in all weather, traffic and road conditions. System has limited control capability and the driver may need to steer, brake or accelerate at any time to maintain safety. See Owner's Manual for safety information.
- [^] CarPlay is a registered trademark of Apple Inc. Android Auto is a trademark of Google LLC. Compatible device required. Wired connections require a USB connection.
- [•] Compatible device required.
- ^{*} Leather-accented features and upholstery may contain synthetic material. Minor trim variations may occur from time to time.
- [#] Premium paint available at extra cost. In some cases, the printed colours may vary from the actual paint colours.
- [~] Black painted roof available on N-TREK, Ti & Ti-L models at additional cost.



FINANCIAL
SERVICES

For more information please visit nissan.com.au/owners, ask your Nissan Dealer or phone 1800 035 035 during normal AEST business hours.

All illustrations, information and specifications presented and referred to in this brochure were correct at the time this brochure was approved for printing. The colours in the photographs may vary from actual colours. Nissan Motor Co (Australia) Pty. Ltd. reserves the right, subject to the laws of Australia and/or the regulations of any competent authority which may apply from time to time, at its discretion at any time and without prior notice, to discontinue or change the models, features, specifications, designs and prices of the products referred to in this brochure and any optional equipment therefore without incurring any liability whatsoever to any purchaser or prospective purchaser of any such products. Some of the items referred to herein are optional at extra cost. Some options may be required in combination with other options. Always consult your Nissan Dealer for the latest information on models, specifications, features, prices, options and availability. Nissan Motor Co (Australia) Pty. Ltd. ACN 004 663 156. Updated June 2024.



NissanAustralia



@nissanaustralia



NissanAustralia