



NISSAN MY24 PATROL

Specifications

	Ti	Ti-L
Engine		
VK56VD 5.6 Litre VVEL V8 petrol engine	•	•
Direct Injection Gasoline (DIG)	•	•
Displacement (cc)	5552	
Bore x stroke (mm)	98 x 92	
Compression ratio	11.2:1	
Max power (kW@rpm)	298@5800	
Max torque (Nm@rpm)	560@4000	

Transmission		
7 Speed automatic transmission with Manual Mode & Adaptive Shift Control (ASC)	•	•
Transfer case - Intelligent 4x4 with electronic 4WD selection	•	•
Ratio 1st	4.887	
Ratio 2nd	3.170	
Ratio 3rd	2.027	
Ratio 4th	1.412	
Ratio 5th	1.000	
Ratio 6th	0.864	
Ratio 7th	0.775	
Ratio Reverse	4.041	
Final Drive	3.357	
Transfer Ratio - Low	2.679:1	
Transfer Ratio - High	1:1	

Dimensions		
Overall length (mm)	5175	
Overall width (mm, excluding mirrors)	1995	
Overall height (mm)	1940	1955
Wheelbase (mm)	3075	
Track width (mm, front/rear)	1695/1695	
Ground Clearance (mm)	273	
Min Turning Circle (m, Curb to Curb)	12.5	
Carrying capacity* (kg)	688	639
Approach angle (degrees)	34.4	28.0
Departure angle (degrees)	26.3	

Weights		
Braked towing capacity* (kg)	3500	
Unbraked towing capacity (kg)	750	
Kerb mass* (kg)	2812	2861
Gross Vehicle Mass* (kg)	3500	
Maximum towball download (kg)	350	
Gross front axle capacity (kg)	1650	
Gross rear axle capacity (kg)	2030	
Gross combined mass (kg)	7000	

	Ti	Ti-L
Fuel		
Fuel type - Premium Unleaded Petrol (95 RON or higher)	•	•
Fuel tank capacity (litres)	140	
Fuel consumption l/100km (ADR 81/02 combined) ^a	14.4	

Suspension and Steering		
Hydraulic Body Motion Control suspension (front and rear) (HBMC)	•	•
Independent double wishbone coil sprung front and rear suspension	•	•
Front and rear ventilated disc brakes	•	•
Rear Helical Limited Slip Differential (LSD)	•	•
Vehicle speed sensitive power steering	•	•

Wheels / Tyres / Capability		
18 x 8J alloy wheels	•	•
265/70R18 tyres	•	•
Full size alloy spare wheel	•	•
Electronic rear differential lock	•	•
Hill Descent Control (HDC) with on/off switch and Hill Start Assist (HSA)	•	•

Instrumentation		
Intelligent 4WD shift switch (Auto, 4H & 4L) with mode select (On Road, Sand, Snow, Rock)	•	•
Drive Computer	•	•
Tachometer and twin trip odometer	•	•
Low fuel level warning indicator	•	•
Door ajar warning indicator	•	•
Oil pressure, water temperature and volt meter gauge	•	•
Outside temperature display	•	•
Dash illumination control	•	•
Leave key warning	•	•
Lights on warning	•	•

Safety and Security		
Intelligent Rear View Mirror	•	•
Nissan Anti Theft System (NATS) vehicle immobiliser	•	
Nissan Anti Theft System (NATS) vehicle immobiliser and bonnet alarm		•
Front and rear parking sensors	•	•
1080p ultrawide reversing camera (fitted accessory - Directed Technologies ³)		
Vehicle Dynamic Control (VDC) with Traction Control System (TCS)	•	•
Anti-Lock Braking System (ABS) and Electronic Brakeforce Distribution (EBD)	•	•
Driver and passenger front and side impact SRS airbags	•	•

MY24 PATROL SPECIFICATIONS

Specifications

	Ti	Ti-L
Curtain SRS airbags all 3 rows	•	•
Driver and passenger 3 point ELR seatbelts with pretensioners, load limiters and height adjustment	•	•
Second row 3 point ELR seatbelts with height adjustment	•	•
Third row 3 point ELR seatbelts	•	•
2nd row child restraint anchorage points (2 x ISOFIX outer seats, 2 x top tether)	•	•
3rd row child restraint anchorage point (right hand seat)	•	•
Driver and passenger seatbelt warning and reminder	•	•
Intelligent Cruise Control	•	•
Intelligent Emergency Braking	•	•
Intelligent Forward Collision Warning	•	•
Lane Departure Warning	•	•
Intelligent Lane Intervention	•	•
Blind Spot Warning	•	•
Intelligent Blind Spot Intervention	•	•
Rear Cross Traffic Alert	•	•
Tyre Pressure Monitoring System	•	•

Comfort & Convenience

Intelligent Key™ with remote keyless entry	•	•
Push button engine start	•	•
Manual tilt and telescopic adjustable steering column	•	
Tilt and telescopic electronically adjustable steering column		•
Dual-zone climate control	•	
Dual-zone climate control with Intelligent Key memory		•
Power adjustable, manual folding, heated door mirrors & integrated indicator lights	•	•
First and second row power windows	•	•
Heated / Cooled front seats		•
Second row cooler controls	•	•
2 USB charging ports (behind centre console)	•	•
Steering wheel audio controls	•	•

Infotainment and Connectivity
(Fitted Accessory by Directed Technologies³)

10.1" multimedia colour touchscreen display	•	•
Wireless & wired Apple CarPlay® [£] & Android Auto™ [£] Smartphone connectivity	•	•
15w wireless smartphone [¥] charge pocket	•	•
iGO Street Navigation (includes 3 years of licensed updates)	•	•
Hema Off-Road Navigation 30 Day Trial [®] (app pre-loaded to unit, must be activated by the customer)	•	•
Audio system with AM/FM/Digital Radio (DAB+)/RDS	•	•
Bluetooth® [¥] 5.0 handsfree phone system and audio streaming	•	•
USB-C (1 in front) and USB-A (1 in front)	•	•
Premium 6 speaker audio system		•

Interior

Front adjustable active headrests	•	•
Rear adjustable headrests	•	•
Leather accented* seat trim	•	•

	Ti	Ti-L
Leather accented* steering wheel and shift lever	•	•
Leather accented* door trim	•	•
Foot release park brake	•	•
Chrome interior door handles	•	•
First row centre console cool box	•	•
First and second row door pockets	•	•
Front centre upper storage pocket	•	•
Driver and front passenger door lock and unlock	•	•
Driver and front passenger back pocket	•	•
Front and rear opening centre console storage with armrest	•	•
Glove compartment with lock	•	•
Cup holders	4	4
Bottle holders	8	8
Sunglasses holder	•	•
Driver and passenger assist grips (first, second and third row)	•	•
Door operated interior lights	•	•
Rear luggage area light	•	•
Front map lights	•	•
Second row passenger reading lights	•	•
Driver and passenger sunvisors with extension and illuminated vanity mirrors	•	•
Second row coat hanger hooks	2	2
Cargo net hooks	•	•
Floor mats	•	•
12V power outlets (front, centre console, second row and rear luggage area)	•	•
Seating		
Seating capacity	8	7
10-way driver seat with power slide/ recline/ height/tilt/lumbar adjustment	•	•
8-way front passenger seat with power slide/recline/height/tilt adjustment	•	•
Driver's seat memory, with two settings, including side mirrors and steering column		•
60/40 split-fold second row seating with manual recline and fold function and centre armrest	•	•
60/40 split-fold third row seating with manual recline and fold function	•	•

Exterior

Unique front grille design		•
Unique front bumper design		•
Sunroof (electric one-touch power tilt & slide) with Privacy glass		•
Roof rails		•
Power operated tailgate		•
Front variable intermittent rain sensing wipers	•	•
Rear intermittent wiper with demister timer	•	•
Side steps	•	•
Rear spoiler	•	•
Front and rear mud guards	•	•
Front and rear towing hooks	•	•
Chrome exterior door handles	•	•
One touch turn signal	•	•
Electromagnetic fuel lid opener	•	•
V8 Emblem	•	•

MY24 PATROL SPECIFICATIONS

	Ti	Ti-L
Exterior - lighting		
Puddle illumination light		•
Automatic headlights	•	•
Automatic headlight leveliser	•	•
Headlight washers	•	•
Follow Me Home headlight function	•	•
LED headlights	•	•
LED Daytime Running Lamps	•	•
LED Front fog lights	•	•
LED rear combination light	•	•
Exterior - glass		
Front door UV reducing glass	•	•
Rear side and back privacy glass	•	•
Front windscreen with laminated glass	•	•
Exterior paint		
Brilliant Silver	•	•
Black Obsidian	•	•
Champagne Quartz	•	•
Gun Metallic	•	•
Hermosa Blue	•	•
Moonstone White	•	•
Ownership		
Capped Price Service ^M	•	•
5 year/unlimited kms Warranty ^{**}	•	•
5 year 24-Hour Roadside Assistance Program [*]	•	•

Not available

•

Standard

MY24 PATROL SPECIFICATIONS

CHOOSE YOUR EXTERIOR PAINT COLOUR



Gun Metallic (KAD)



Black Obsidian (KH3)*



Champagne Quartz (HAG)*



Brilliant Silver (K23)



Hermosa Blue (BW5)*



Moonstone White (QAC)*

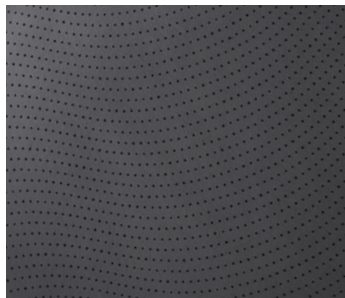
In some cases, the printed colours may vary from the actual paint colours.

*Premium paint available at extra cost.

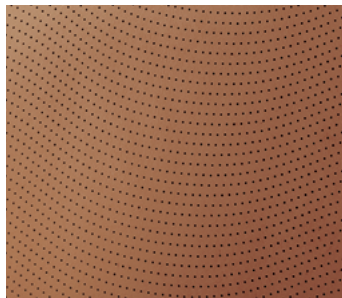
∞Premium paint available at extra cost. Available only upon request and built to order.
Ti-L model shown.

MY24 PATROL SPECIFICATIONS

CHOOSE YOUR INTERIOR TRIM



Interior black leather
accented seat trim[†]



Interior light tan leather
accented seat trim[†]
(forward order only)

[†]Vehicle towing capacity is subject to towbar/towball capacity and design. Towing capacity may be reduced if a non genuine Nissan towbar is fitted. Please refer to the Genuine accessory brochure for towbar capacity information.

[†]Kerb mass = unladen mass of vehicle with full fuel

[†]Carrying capacity is the GVM minus the Kerb mass. The kerb mass does not include passengers, luggage, cargo, any accessories fitted or any towball download (as appropriate). Carrying capacity is distributed across both the front and rear axles, never exceed the GVM or the axle limits.

[†]Leather accented features and upholstery may contain synthetic material.

[†]GVM = Gross Vehicle Mass. GVM is the maximum laden mass of a motor vehicle.

[†]Figures tested in accordance with ADR81/02 (combined test). Figures stated for the purposes of comparison amongst vehicles only. It is unlikely that this fuel consumption figure will be achieved in real world driving conditions. Actual fuel consumption depends on factors such as traffic conditions, vehicle condition, how you drive and any accessories fitted.

[†]Ask your Nissan Dealer to explain exactly what items are covered in each Scheduled Service. Applies for up to 6 years/120,000kms (whichever occurs first). Some exclusions apply. Ask your

Nissan Dealer or visit nissan.com.au/service to find out more and for full terms and conditions.

[†]Warranty operates in addition to your rights under the Australian Consumer Law. See Nissan.com.au/warranty for terms and conditions.

[†]Fitted Directed Infotainment System covered by 5 year unlimited kilometre warranty. This warranty operates in addition to your rights under the Australian Consumer Law. See Nissan.com.au/warranty for terms and conditions.

[†]Availability of specific features is dependent upon the phone's Bluetooth[®] support. Refer to your phone owner's manual for details.

[†]CarPlay is a registered trademark of Apple Inc. Android Auto is a trademark of Google LMC. Compatible device required. Wired connections require a USB connection.

[†]Compatible device required.

[†]Trial requires Hema Maps membership and is subject to Hema Maps terms and conditions. WiFi connection required to activate membership. Subscription fees apply after 30 day trial completes. Nissan is not responsible for and does not guarantee or endorse Hema Maps or its products and services.

[†]Terms and conditions apply, please visit nissan.com.au/roadsideassistance



FINANCIAL SERVICES

For more information please visit nissan.com.au/owners, ask your Nissan Dealer or phone 1800 035 035 during normal AEST business hours.

All illustrations, information and specifications presented and referred to in this brochure are for MY24 Patrol models and were correct at the time this brochure was approved for printing. The colours in the photographs may vary from actual colours. However, Nissan Motor Co (Australia) Pty. Ltd. reserves the right, subject to the laws of Australia and/or the regulations of any competent authority which may apply from time to time, at its discretion anytime and without prior notice to discontinue or change the models, features, specifications, designs and prices of the products referred to in this brochure and any optional equipment therefore without incurring any liability whatsoever to any purchaser or prospective purchaser of any such products. Some of the items referred to herein are optional at extra cost. Some options may be required in combination with other options. Always consult your Nissan Dealer for the latest information on models, specifications, features, prices, options and availability. Nissan Motor Co (Australia) Pty. Ltd. ACN 004 663 156.



NissanAustralia



@nissanaustralia



NissanAustralia



nissanaustralia

nissan.com.au