



AUSTRALIA'S ONLY
10 YEAR
300,000KM WARRANTY
WHEN SERVICING WITH NISSAN*



JUKE Defy Ordinary

New Nissan JUKE Who needs ordinary?

The New Nissan JUKE puts the fun back in urban driving, starting with its bold, uncompromising design. Inside, your whole family will be captivated by high-quality materials and attention to detail, and surrounded with advanced technologies.



* Up to 10 year warranty when servicing at authorised Nissan dealers. Full terms at [Nissan.com.au/warranty](https://www.nissan.com.au/warranty).
JUKE N-Sport model with black roof and black 19" alloy wheels shown throughout (unless otherwise stated)

Powerful presence.
Attractive attitude.

The new iconic yellow is the perfect shade to show off New JUKE's bold looks and strong personality. The new N-Sport grade is even better equipped to stand out from the crowd.



N-Sport with silver front lip finisher



Update to New N-Sport 19" Alloy wheel



N-Sport with Automatic LED headlights





Feel the pleasure.

New JUKE's interior is designed around the driver, from its new center console, larger glove box, bigger infotainment screen and fully digital meters* and Alcantara® upholstery on select grades*. Sit down, get comfortable and enjoy the ride of your life.



12.3" TFT Advanced Drive-Assist® Display instrument cluster*



12.3" touchscreen display



Black and yellow Alcantara® Seat Trims*



Frameless rear view mirror*

Steering wheel shown may contain synthetic material. Variations may occur from time to time.

*Available on ST-L, Ti and N-Sport.
*Available on N-Sport only.

Feel the quality.

The interior of JUKE N-Sport is designed with attention to detail. Its premium black headliner, black and yellow Alcantara® quilt and yellow stitching* highlight the craftsmanship and design of the monoform seats, which cocoon the driver for a uniquely immersive driving experience. Bose® Personal Plus sound with Ultra Nearfield speakers built into the front headrests and 10 strategically placed Bose® speakers create the ultimate listening experience.



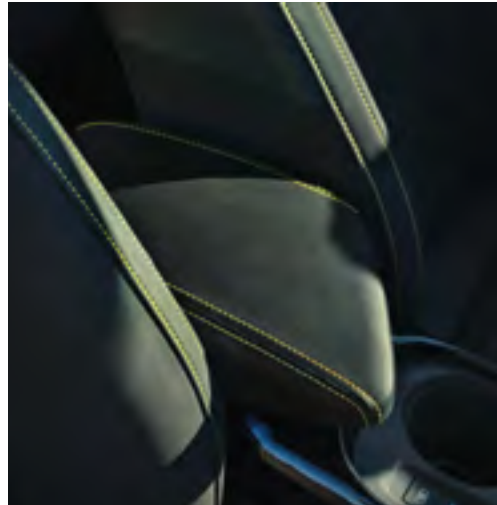
Black and Yellow Alcantara®, new quilt design and yellow stitching*



Monoform sport seat



Bose® Personal Plus*



Adjustable armrest



^Available on N-Sport only.
*Available on Ti and N-Sport only.

Always connected.

Smartphone connectivity will keep you seamlessly connected to the world around you with Android Auto™[^] and Apple CarPlay®[^], available both wired and wireless[^] across all grades.



12.3" touchscreen display



2 x rear USB



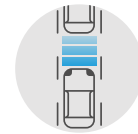
Wireless smartphone charging[°]

[^]CarPlay is a trademark of Apple Inc. Android Auto is a trademark of Google LLC. Compatible device required. Wired connections require a USB connection.

[°]Compatible device required. Available on ST-L, Ti and N-sport models only.

There when it counts.

Select grades of the Nissan JUKE is equipped with advanced ProPILOT[™] safety technologies, designed to keep you and your passengers safe for maximum peace of mind.



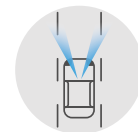
INTELLIGENT CRUISE CONTROL[†]

Keeps your distance by measuring the space from the vehicle ahead, controlling acceleration and deceleration to automatically maintain a suitable following distance within your set speed.



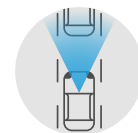
INTELLIGENT BLIND SPOT INTERVENTION[†]

Alerts you if there's a vehicle in the blind spot area on either side of the car, and helps bring you back into line.



INTELLIGENT LANE INTERVENTION[†]

Warns the driver when the vehicle has left the centre of the travelling lane and helps assist the driver to return to the center of the lane by applying the brakes to the left or right wheels individually (for a short period of time).



INTELLIGENT EMERGENCY BRAKING[†]

With pedestrian and cyclist recognition. Monitors the surrounding area in front of the car for vehicle, pedestrians and cyclists, helping avoid or reduce damage caused by collisions.



A view from all sides.

Fear no parking spot. Intelligent Around View[®] Monitor with Moving Object Detection^{^#} makes parking easier with four cameras providing a 360 degree bird's-eye view and helping you navigate those tight parking spaces.

[‡] ProPILOT cannot prevent collisions. It is the driver's responsibility to be in control of the vehicle at all times. Always monitor traffic conditions and keep both hands on the steering wheel. System operates only when lane markings are detected. Does not function in all weather, traffic and road conditions. System has limited control capability and the driver may need to steer, brake or accelerate at any time to maintain safety. See Owner's Manual for safety information. Not available on ST and ST+.

[^] Driver's aid(s) only, not a substitute for safe driving. Always monitor your surroundings.

[#] Not available on ST and ST+

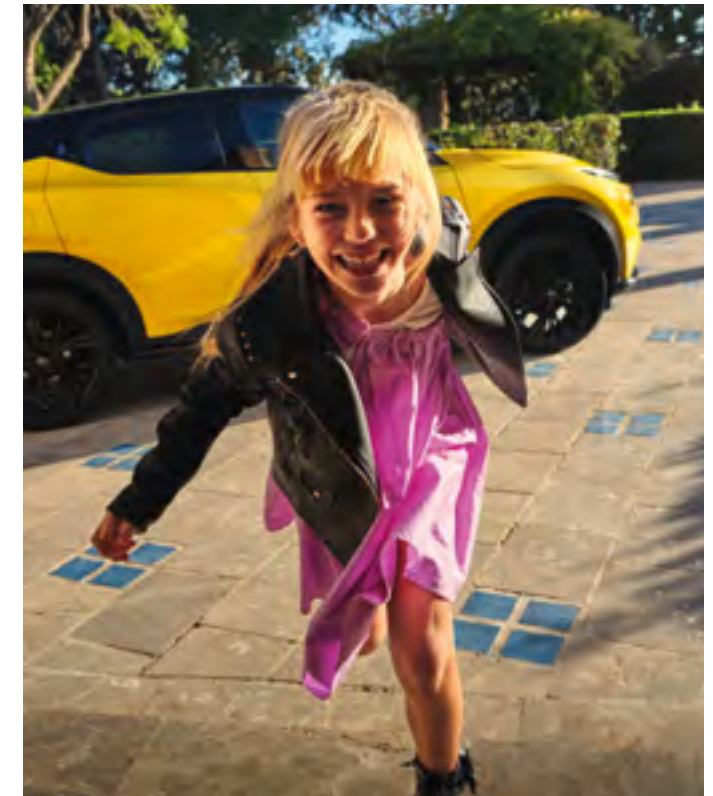


Your JUKE. Your way.

From equipment level to colours, accessories and more, this is where you can build your very own JUKE to fit your personality.

On select grades, Nissan JUKE is available in a dazzling array of 8 body colors and 7 two-tone combinations.

So whatever your style, taste or personality, we've got you covered.



ST



ST features:

- Intelligent Emergency Braking with Pedestrian & Cyclist Detection
- Intelligent Trace & Ride Control
- Intelligent Cruise Control
- Blind Spot Intervention
- Intelligent Lane Intervention
- Rear-view Camera & rear parking sensors
- Traffic Sign Recognition
- High Beam Assist
- Digital Radio
- 7" TFT Meter/ADAD
- 12.3" touchscreen display audio
- Wireless Apple CarPlay®[^] & Wireless Android Auto™[^]
- USB (A&C port)
- 17" steel flex wheels
- Rear disc brakes
- Auto LED headlights w/ Follow Me Home function
- Paddle shifters
- Electric park brake with auto-hold

ST+



ST+ includes ST features plus/or:

- LED Fog lights
- Front parking sensors
- Auto air-conditioning
- Climate control
- Satellite Navigation
- Heated front seats
- 17" two-tone alloys

ST-L



ST-L includes ST+ features plus/or:

- ProPILOT⁴ (Keep Lane Assist)
- Intelligent Around View[®] Monitor with Moving Object Detection
- Intelligent Key[®] with walkaway lock & approach unlock function
- 12.3" TFT Advanced Drive-Assist[®] Display instrument cluster
- Wireless smartphone charger[°]
- 19" aero alloys
- Privacy glass (second row and rear windows)
- Frameless automatic dimming rear view mirror
- Part synthetic leather⁴ / cloth seat trim with w/ melange accents
- Optional black painted roof
- Rear USB-A charging port

⁴ ProPILOT cannot prevent collisions. It is the driver's responsibility to be in control of the vehicle at all times. Always monitor traffic conditions and keep both hands on the steering wheel. System operates only when lane markings are detected. Does not function in all weather, traffic and road conditions. System has limited control capability and the driver may need to steer, brake or accelerate at any time to maintain safety. See Owner's Manual for safety information

[°]Leather-accented features and upholstery may contain synthetic material.

[°]Compatible device required

Ti



Ti includes ST-L features plus/or:

- 19" alloy wheels
- Silver front, rear and side accents
- Silver front lip finisher
- 10 speaker Bose Personal[®] Plus with headrest audio (driver and front passenger)
- Illuminated JUKE kick plates
- Black Alcantara dashboard, knee pad & door panels
- Monoform quilted leather-accented⁴ with Alcantara seat trim
- Black chrome centre console and headrest finisher
- Optional black painted roof
- Luggage board
- Tyre pressure monitoring system
- Silver front, rear & side accents
- Silver front lip finisher
- Luggage board

⁴Leather-accented features and upholstery may contain synthetic material. Minor trim variations may occur from time to time.

[#] Black painted roof available at additional cost

N-Sport



N-Sport includes ST-L features plus/or:

- 19" Akari alloys
- Black Front, rear & side accents
- Silver front lip finisher
- Yellow personalised interior colour
- Black grained PVC dashboard and black PVC door finisher
- Soft-pad Alcantara® dashboard (black) with white stitching
- 10 speaker Bose Personal® Plus with headrest audio (driver and front passenger)
- Illuminated JUKE kick plates
- Black painted roof
- Tyre pressure monitoring system
- Luggage board

CHOOSE YOUR EXTERIOR PAINT COLOUR

SINGLE TONE COLOURS



Iconic Yellow



Fuji Sunset Red*



Pearl White



Ceramic Grey*



Black Onyx*



Magnetic Blue*



Gun Metallic*



Platinum^o

TWO TONE COLOURS*



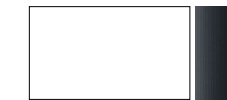
Iconic Yellow with Black Roof*



Fuji Sunset Red* with Black Roof*



Ceramic Grey* with Black Roof*



Pearl White with Black Roof*



Magnetic Blue* with Black Roof*



Gun Metallic* with Black Roof^o



Platinum* with Black Roof^o

Refer to specifications at rear of brochure for paint applicability across models.

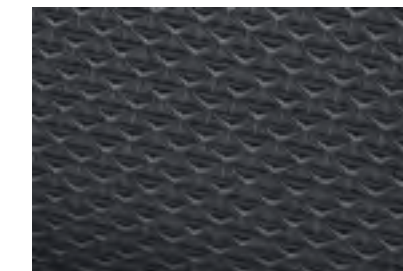
CHOOSE YOUR INTERIOR TRIM



Part PVC and part Alcantara monoform seats with yellow highlights and stitching. Available on N-Sport.



Part PVC and part Alcantara monoform seats. Available on Ti.



Monoform black cloth seats. Available on ST, ST+ and ST-L.

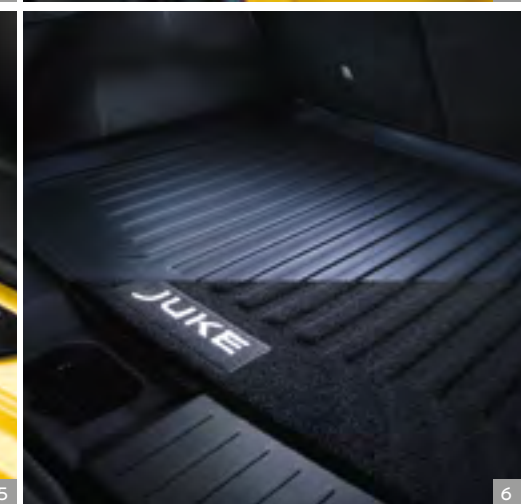
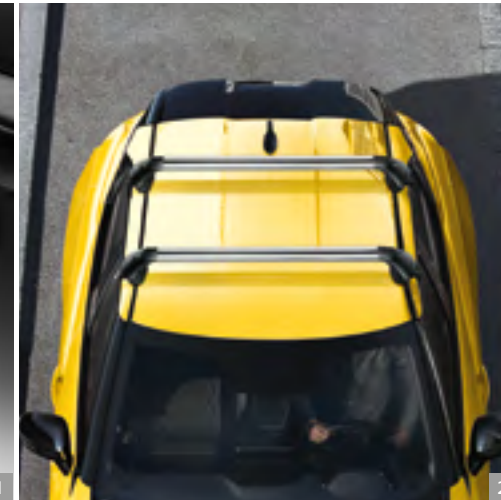
* Premium paint available at extra cost.

• Black painted roof available on ST-L and Ti models at additional cost.

° Exterior paint available by dealer order only

* Leather-accented features and upholstery may contain synthetic material. Minor trim variations may occur from time to time.

Nissan has taken care to ensure that the colour swatches presented here are the closest possible representations of actual vehicle colours. Swatches may vary slightly due to the printing process and whether viewed in daylight, fluorescent or incandescent light. Please see the actual colours at your local Nissan Dealer.



More JUKE, more you.

Nissan Accessories are designed to bring advanced, dynamism and elegance to your New JUKE. Do more, go further and enjoy our JUKE Accessory line-up.

1 - Towbar removable

2 - Aluminium load carrier with quick fix

3 - Trunk entry guard

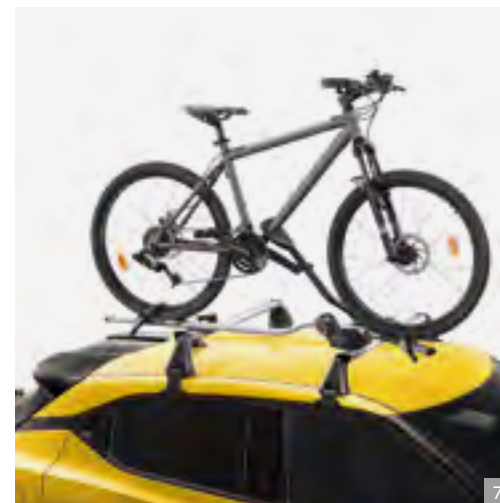
4 - Mudguards (front & rear)

5 - Illuminated kickplates (front only)

6 - Trunk liner reversible

7 - Roof mounted bike carrier

8 - Velour floor mats



MYNISSAN OWNERSHIP

A complete ownership experience to help you get the most out of your Nissan. It includes the following:

AUSTRALIA'S ONLY
10 YEAR
300,000KM WARRANTY
WHEN SERVICING WITH NISSAN*

10 YEAR

300,000 KILOMETRE WARRANTY
WHEN SERVICING WITH NISSAN[^]

Receive assurance with up to 10 year/300,000 kilometre warranty (whichever occurs first)[^].

10 YEAR

24/7 ROADSIDE ASSISTANCE WHEN
SERVICING WITH NISSAN[†]

No matter where you're planning to journey, you'll have the peace of mind of knowing that if you lock your keys in the car, have a flat tyre or battery, or run out of fuel, we'll help get you back on the road at no charge[†].

5 YEAR

NISSAN FLAT PRICE SERVICE*

All Nissan vehicles first registered from 1 January 2025 are eligible for Nissan Flat Price Service. As part of this servicing program, we've set one flat price you'll pay for every service for the first five services according to your vehicle's service schedule.*

FACTORY-TRAINED TECHNICIANS

Using dedicated diagnostic equipment and Nissan Genuine Parts they'll keep your vehicle in top condition.

OPTIONAL PRE-PAID MAINTENANCE PLANS

Our optional Pre-paid Maintenance Plan takes the hassle out of budgeting for scheduled service costs over time, instead offering you the convenience of a one-off payment when you purchase your new Nissan vehicle.

NISSAN GENUINE ACCESSORIES

Your Nissan Dealer can show you a variety of Nissan Genuine Accessories to protect, enhance and personalise your Nissan.

FINANCIAL SERVICES

Choose from a range of finance options at very competitive rates and terms, as well as various insurance solutions to protect you and your vehicle.

For more information please visit [Nissan.com.au/owners](https://www.nissan.com.au/owners), ask your Nissan Dealer or phone 1800 035 035 during normal AEST business hours.

[^] Whichever occurs first, when servicing at authorised Nissan dealers. Where vehicle is not serviced through Nissan or ceases to be serviced at Nissan, additional years will not be added so 10 year/300,000km warranty (whichever occurs first) may not apply. Warranty protection will remain 5 year/unlimited km warranty, plus any additional service activated years previously added. Conditions apply. Full terms at [Nissan.com.au/warranty](https://www.nissan.com.au/warranty).

NOTE: Our goods come with guarantees that cannot be excluded under the Australian Consumer Law. You are entitled to a replacement or refund for a major failure and compensation for any other reasonably foreseeable loss or damage. You are also entitled to have the goods repaired or replaced if goods fail to be of acceptable quality and the failure does not amount to a major failure.

[†] When servicing at authorised Nissan dealers. Where vehicle is not serviced through Nissan or ceases to be serviced at Nissan, additional years will not be added, so 10 year/300,000km roadside assist (whichever occurs first) may not apply. Roadside assist duration will remain as 1 year/unlimited kilometre roadside assist, plus any service activated years previously added. Conditions apply. Full terms at [Nissan.com.au/roadsideassistance](https://www.nissan.com.au/roadsideassistance).

* Ask your Nissan Dealer to explain exactly what items are covered in each Scheduled Service. Applies for the first 5 services or 5 years, whichever occurs first. Some exclusions apply. Ask your Nissan Dealer or view full terms at [Nissan.com.au/service](https://www.nissan.com.au/service).

All illustrations, information and specifications presented and referred to in this brochure were correct at the time this brochure was approved for printing. The colours in the photographs may vary from actual colours. However, Nissan Motor Co (Australia) Pty. Ltd. reserves the right, subject to the laws of Australia and/or the regulations of any competent authority which may apply from time to time, at its discretion at anytime and without prior notice to discontinue or change the models, features, specifications, designs and prices of the products referred to in this brochure and any optional equipment therefore without incurring any liability whatsoever to any purchaser or prospective purchaser of any such products. Some of the items referred to herein are optional at extra cost. Some options may be required in combination with other options. Always consult your Nissan Dealer for the latest information on models, specifications, features, prices, options and availability. Nissan Motor Co (Australia) Pty. Ltd. ACN 004 663 156.

Updated January 2025.



NissanAustralia



@nissanaustralia



NissanAustralia

nissan.com.au